

Liberate Your Mobile Radio™

 **WIRELESS PACIFIC™**
...WHEN IT MATTERS

X10DR®

LIBERATE YOUR MOBILE RADIO

Secure Wireless Microphone



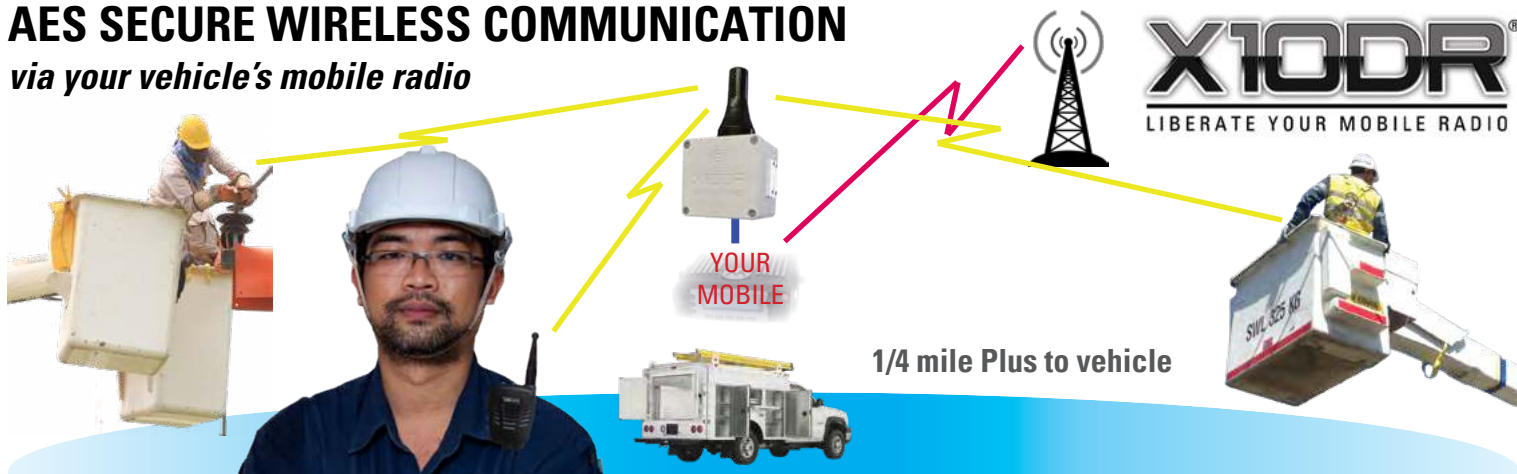
ELITE
Plus
Series



Handsfree Talkaround
Multi Mic Capability
Advanced Emergency
Extra Loud Audio
AES Encryption
Relay Mode
Find Me™

AES SECURE WIRELESS COMMUNICATION

via your vehicle's mobile radio



talk up to 1/2 mile (1000m) to your crew

Staying Secure In Remote Work Environments

The vehicle mounted mobile radio is often the first responders' chief communication link to central despatch and other radio units. However, when a linesman needs to go back and wait at the vehicle, to provide or receive an update, operations slow or at worst, come to a stand still, losing critical response time and possibly placing lives at risk. X10DR is revolutionary technology, which allows electrical utility workers to stay in constant communication with each other locally on-site or back to base, via their vehicle mounted mobile radio, for up to five hundred meters (over a quarter of a mile) from the vehicle.

Talk On or Off The Network - Now with local Handsfree option

Elite devices exclusively allow two, or even three, X10DR Elite handset users to communicate via a single vehicle gateway unit. This provides utility workers with an AES secure, local on-site, exclusive voice channel, while simultaneously monitoring their vehicle's radio operational channel and to instantly communicate over the network whenever desired. Pressing the secure microphone's top mounted Talkaround button allows team members to communicate freely, off-network amongst themselves. Additionally, X10DR Elite Plus includes user selectable, **full duplex, handsfree talkaround** capability. This allows users to effortlessly communicate locally on-site amongst themselves in full duplex mode - totally handsfree - while never missing a spoken syllable received over their vehicle's mobile radio and naturally with the ability to respond, as usual, with a press of the side PTT button.

Just imagine : Electrical Utility workers up in a " bucket" will be free to use both hands enhancing safety while communicating critical information with their groundman or an adjacent lineman, even in the stormiest of tempest.

Talk Back Microphone - In Cab Option

The XTBM Talk back Microphone keeps those who stay in the vehicle fully informed of what is being said over the radio or locally on ground. This ruggedized IP67 weatherproof speaker microphone delivers over 1W RMS of loud and clear audio power allowing the user to communicate with Intercom crew or other members over the radio.

Emergency Duress Alarm

The X10DR secure wireless microphone naturally provide a duress button that can be used to activate the emergency mode within the host mobile radio. Field personnel can now call for assistance even while hundreds of meters from their vehicle. X10DR Elite models also allow localized alerting so your nearby partner instantly knows your predicament. Naturally, X10DR can be programmed to automatically broadcast "Live Mic" to allow remote monitoring of an emergency situation.

Mandown Biometric Monitor option

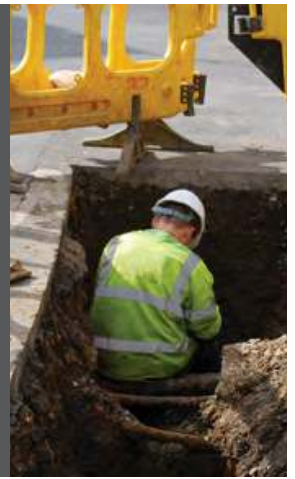
When fitted and activated, the Mandown function turns on automatically whenever you remove the handset from its charger. If there is no user movement or transmit activity for 2 minutes, quickening alert tones will sound for 30 seconds. If there is still no user activity, the radio's emergency input will be triggered. To temporarily disable Mandown operation, either power up the handset or remove it from its charger while pressing the top grey Control button until a 4 beep "pause" confirmation sounds. A gentle reminder tick will sound every 2 minutes until re-enabled. To re-enable Mandown, either power off/on the handset or place the handset into a charger and then remove. Mandown is disabled when the handset is placed into any charger/gateway.

Extra Loud Receive Audio

While some X10DR users may prefer to wear headsets or discrete earpieces to maintain privacy, many users will chose to operate their handsets like a traditional portable radio. The X10DR Elite Plus provide double the receive audio volume of previous models to ensure that no matter the background noise level, messages will always get through loud and clear.

On the road to X10DR...

Since the creation of the first mobile two way radio, system designers and radio manufacturers have grappled with solutions to enhance user mobility when away from the vehicle. These solutions typically involved additional portable hand-held radios and significant additions of base station infrastructure; radio sites and complex remote receiver voting systems to back fill marginal coverage areas. Alternatively, some manufacturers developed cumbersome vehicle based mobile repeater systems where simplex portable transmissions are repeated through a mobile repeater back into the base station network. These systems required careful engineering, additional frequencies and critically complex contention management protocols to eliminate clashing from multiple vehicle repeaters at scene. Traditional vehicular repeaters usually added system delays and required user intervention for managing which channels, mode or status to use in order to make them work. Both these solutions came at a cost... a big cost! In 2012, Wireless Pacific invented the first X10DR. Now in its third iteration, X10DR Elite Plus clearly defines truly seamless cost effective Out Of Vehicle communications.



Earpiece/ Headset/ Audio Accessory Operation

Elite models feature a smart Hirose® audio port on the base of each secure microphone that allows use of a wide variety of specialist and everyday headsets and audio accessories. When required, programming allows the handset's battery to be shared with externally connected audio accessories requiring (3.3V) DC power. Alternatively an earpiece provides a simple, easy and effective way to maintain quiet secured private communications. (See X10DR Accessory brochure for more details)

Find Me™ Locator

In the event of a lost secure microphone or to find a user who may have been rendered unconscious, the new Find Me™ feature can be triggered by momentarily double pressing the front panel button on the gateway charging cradle. The Find Me command causes the handsets to squeal at their maximum volume so its user can be quickly located in the thickest smoke or dense foliage.

External Battery Connectivity

For those responding to natural disasters where a handset may needs to be in constant use without being returned to the vehicle's charging gateway, a secondary external battery to be plugged into the handset's bottom headset socket via a cord adaptor. Once connected, the LED status light will blink every 10 seconds to indicate charging is taking place. The handset can be used as normal with* or without the external battery attached. The external battery will typically recharge the handsets internal 1450mA battery in 4 hours before disconnecting or may be left connected and swapped over with a fresh battery as needed. When connected to a fully charged handset operation is typically doubled. *Headset operation not available when external battery is connected.

Extra Range Gateway

X10DR Elite Plus Gateways are also available in an IP65 rated external weatherproof housing with integrated multi-polarity antenna which provides enhanced signal strength to achieve better in-to-building with line of site coverage up to 700 meters from the vehicle. The new Plus rooftop gateways allow "touchless" pairing thereby further simplifying the initial vehicle set up or changing handsets once deployed. When ordering XRTG rooftop gateways, you must order the number (max 3) of XEX2 handsets you require.

Command/Automatic Relay Mode

The X10DR Elite Plus now feature the unique ability for a handset user to activate Relay mode whereby a partner's handset that has lost direct connection with the vehicle gateway will then have their communications seamlessly relayed via their partner's Relay activated handset. Designed for in-to-building range enhancement, it would be typically deployed when entering buildings whose physical construction prevents an X10DR handset communicating back to their vehicle. The Relay handset user would remain in a location that remains connected to the vehicle while their partners enter deeper into the building to perform their duties. Naturally a third "Relay activated" handset can be left at that location allowing both workers to move around the building. As an added bonus should the Relay activated handset lose connection with the vehicle, it can continue to communicate with handsets linked to it.

(See the X10DR Plus Series user manual for a full description of capabilities.)



Now get totally liberated!

- HANDSFREE TALKAROUND OPTION
- MULTI MICROPHONE OPERATION
- TALK IN OR OUT OF THE VEHICLE
- AES 128 BIT ENCRYPTED VOICE
- DRAMATIC NOISE REDUCTION
- VERY LOUD & CLEAR AUDIO
- SIMPLE INTUITIVE DESIGN
- MINIMAL USER TRAINING
- LIGHTWEIGHT & RUGGED
- SEAMLESS INTEGRATION
- PATENTED INNOVATION
- IP67 WATERPROOF MIC
- ALL DAY OPERATION
- IN CAR MONITOR
- PUBLIC ADDRESS
- ULTRA-RELIABLE
- COST EFFECTIVE
- HEADSET PORT



XCFC Custom Front Cover option
XLMC Standard long rotary shoulder mount clip
XNMC Non-metal rotary shoulder mount clip - Suit Electrical utilities
XVMC Velcro® shoulder mount option includes Velcro patch - for best shoulder placement
XWMC Velcro® wireless charging mount option includes Velcro patch - for best shoulder placement



X10DR Elite Plus
Rooftop Gateway



XIPB In-line PTT suits all X10DR audio accessories
WPHFH-X10 Headset Industrial lightweight



XVCA
Velcro Clip Adaptor



X1WK
Mobile wireless charger



XMDM2
Mobile charger mounting arm



XSJB
Dual Radio Interface Box



XPB-C14
In-line power bank Interface Box



XMVC
mobile charger
Included with XEX2



X10DR Elite Plus
Standard Gateway

base view
Std Gateway



base view
X10W Gateway



X10W Option
10 Watt speaker jack
USB programming port
PA/In-Car volume control
10W RMS IP65 Speaker

What's included in the packages

X10DR-EX2 Elite Plus

XMPA multipolarity roof/rack mount antenna kit

XIC-1.5 1.5m Interface Cable
Use with radio adaptor (order separately)

XEX2 Plus Extra Mic Accessory

X10DRSM-EX2 Elite Plus Mic

XMVC Mobile charger

XDIA Dual Interface Adaptor

XIC-0.5 0.5m Interface Cables (2)

XRTG Plus Rooftop Gateway

X10DR Elite Plus Rooftop Gateway

XIC-6.0 Interface cable 6m (order separately if different length desired)

OPTIONS

1 x XCA-** Radio adaptor (Required but NOT included)
** refer pricelist for currently available radio adaptors

typical style

XEC-4.5 4.5 meter Extension interface cable.
Order when the radio is trunk mounted. Connects to supplied XIC-1.5 interface cable.(optional)

Works with:



more information at:
www.x10dr.com



Copyright © 2020 Wireless Corporation Ltd. All rights reserved.
WIRELESS PACIFIC, X10DR®, LIBERATE YOUR MOBILE RADIO, WHEN IT MATTERS are trademarks or registered trademarks of Wireless Corporation. All other trademarks are the property of their respective owners. V: 2020-0